

DATA SHEET

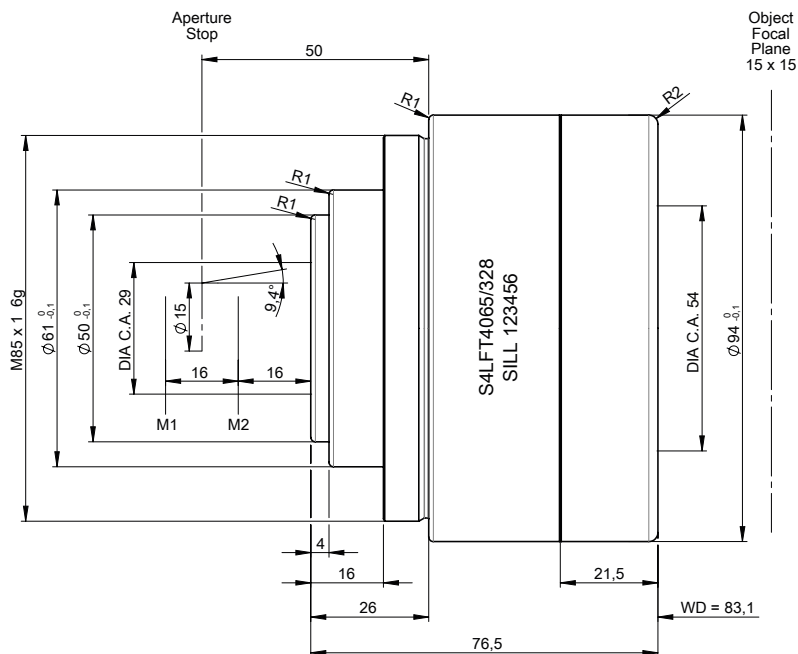
S4LFT4065/328

F-Theta
telecentric - fused silica
1030 - 1090 nm



illustration only

outline drawing

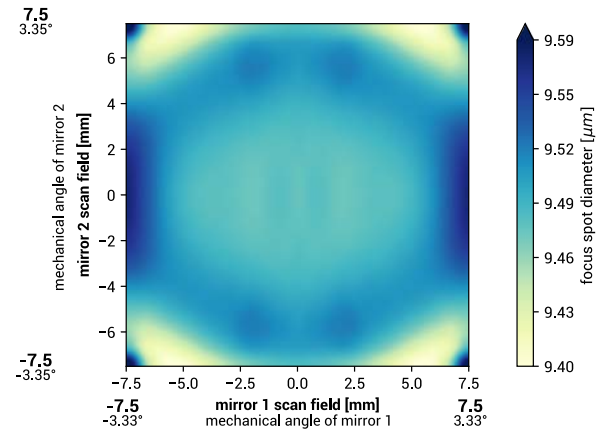


DATA SHEET

specifications

article number	S4LFT4065/328
design wavelength [nm]	1064
effective focal length [mm]	65.1
working distance [mm]	83.1
max. entrance beam-Ø [mm]	15.0
aperture stop distance [mm]	24.0
scan area for a 2 mirror system with mirror distance from lens housing for mirror 2 / mirror 1 [mm x mm]	15 x 15 16.0 / 32.0
max. telecentricity error [°]	2.0
total transmission [%]	> 97
absorption [ppm]	97
lens material	fused silica
LIDT (coating)	5.0 J/cm ² per 1ns pulse at 50Hz
SP and USP usable	yes
weight [kg]	1.02
cover glass	S4LPG0394/328
cleanliness	not specified

spot



spot diameter at 86.5 % level for a Gaussian beam ($M^2 = 1$) with 10.0 mm diameter at $1/e^2$, clipped at 15.0 mm field size and mirror distances as given above for a two mirror scan system

back reflection positions

back reflections [mm] for 1064	
8.37	
23.78	
0.00	
0.00	
0.00	
0.00	
0.00	
0.00	
0.00	
0.00	
0.00	
0.00	

remarks

The stated values are based on a vignetting of less than 1 %.

Effective focal length and working distance have a tolerance of +/- 1.5 %.

Absorption tolerance +/- 25 %. Absorption may increase. Correct cleaning establishes original condition.